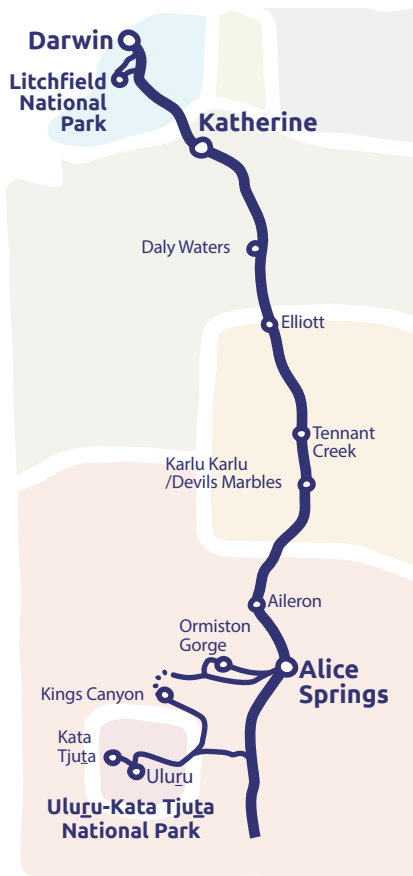




Alice Springs to Darwin

Explorers Way



One of the great Australian road trips is without a doubt from Adelaide to Darwin, along the Explorers Way. Passing some of Australia's favourite natural icons, including Uluru and Kata Tjuta, Watarrka National Park/Kings Canyon, MacDonnell Ranges, Karlu Karlu/Devils Marbles, Nitmiluk National Park and Litchfield National Park. The journey follows the famous explorer, John McDouall Stuart, who was the first European to successfully cross Australia south to north and establish a route to the coastal region of the Northern Territory.

K **12 DAYS**
approx 2230 km

Uluru-Kata Tjuta NP
Tennant Creek region
Katherine region

Icons: Car, Road, Calendar, Kangaroo, Person, Medal, Park Pass

* Refer to page 2 for details



Uluru Camel Tour,
Uluru-Kata Tjuṯa National Park.



Karrke Aboriginal Cultural
Experience & Tours.



Uluru-Kata Tjuṯa National Park.

Travelling from South Australia

Spend the first five days travelling through outback South Australia, stopping in at some of the small coastal towns. Take in the southern and central Flinders Ranges and make sure you stay overnight at Coober Pedy.

DAY ONE AND TWO

Uluru-Kata Tjuṯa National Park

Once you drive across the Northern Territory border, make a beeline for Australia's ultimate icons. Discover the beauty of **Uluru** and **Kata Tjuṯa** – this desert region is blessed with natural wonders, world-class dining experiences and ancient Aboriginal culture.

There's an abundance of things to see and do within the Park. Stop in at the Cultural Centre to learn about the significance of the area to the local Anangu people – the traditional custodians of Uluru and Kata Tjuṯa.

Sunrise and sunset are the best times to admire the incredible scenes of the outback. Remember to take some chairs and 'sunset refreshments' so you can really make the most of this special moment on your Explorers Way journey.

Take a walk or ride around Uluru, follow the Walpa Gorge Walk (2.6km return) to admire the shapes of the domes of Kata Tjuṯa, and keep your eyes peeled for wildlife in the desert.

Accommodation

Ayers Rock Resort offers a range of accommodation options from camping to four-star apartments or stay in luxury at **Longitude 131°**

DAY THREE

Uluru to Kings Canyon

Leave Uluru-Kata Tjuṯa National Park and drive 300km back along the Lasseter Highway and Luritja Highway to reach Watarrka National Park/Kings Canyon. This majestic destination features 100 metre-high sandstone walls, walking trails and views that will leave you speechless.

DAY FOUR

Kings Canyon/Watarrka National Park

For an unforgettable view of Kings Canyon, rise before dawn and follow the 6km trail along the Kings Canyon Rim Walk. There are other smaller walks on offer so make the most of your time here and explore as much as possible.

Food and drink

Aninti Café at the Uluru-Kata Tjuṯa Cultural Centre, Yulara town square offers a café, Asian restaurant and a supermarket to stock up on all your needs, **Curtin Springs Station, Kings Canyon Resort** and **Kings Creek Station, Under a Desert Moon**

Accommodation

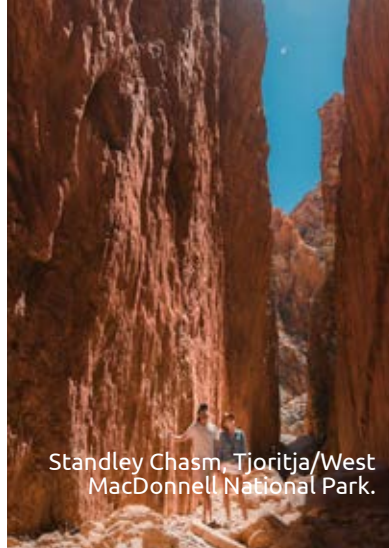
Ayers Rock Resort, Kings Canyon Resort, Kings Creek Station

Tours and activities

Free ranger-guided activities, Uluru Camel Tours, Maruku Arts, Curtin Springs walks, Kings Canyon scenic helicopter tours, Karrke Aboriginal Cultural Experience & Tours



Kings Canyon,
Watarrka National Park.



Standley Chasm, Tjoritja/West
MacDonnell National Park.



Ellery Creek Big Hole,
Tjoritja/West MacDonnell
National Park.



Karlu Karlu/Devils Marbles,
Tennant Creek.

DAY FIVE

Kings Canyon to Alice Springs

Once you get back on the road, head to the NT's second largest town, Alice Springs. If travelling by four-wheel drive, take the Mereenie Loop, or travel along the sealed Luritja and Lasseter Highways, before turning north onto the Stuart Highway towards Alice Springs.

DAY SIX

West MacDonnell Ranges

The West MacDonnell Ranges are an easy day trip from Alice Springs along a sealed road. There are many stops along the way to enjoy. Walk along the trail at Simpsons Gap or stand between the sheer walls of Standley Chasm. To cool off why not enjoy a swim at Ellery Creek Big Hole, Ormiston Gorge or Redbank Gorge.

DAY SEVEN

Alice Springs to Tennant Creek

On your journey from Alice Springs to Tennant Creek, take the time to stop at

Karlu Karlu/Devils Marbles, a sacred site to the Warumungu people. These massive ancient granite boulders are strewn across a wide shallow valley, and continue to crack and change.

DAY EIGHT

Tennant Creek to Daly Waters

As you travel further north, you will notice how the environment around you is changing. The **Daly Waters Historic Pub** is a popular place to stay overnight that offers backpacker, hotel or cabin rooms. The pub and grounds are crammed with memorabilia revealing the pub's colourful history and those who have passed through its doors. Set up camp for the night and make the most of this notoriously characteristic pub.

Food and drink

Sporties Steak and Grill, Mataranka Homestead, Daly Waters Historic Pub

Accommodation:

Tennant Creek Caravan Park, Eldorado Motor Inn, Katherine Holiday Park, Manbullo Homestead Caravan Park, Shady Lane Tourist Park

Tours and activities

Nyinka Nyunyu Art and Culture Centre, Daly Waters Historic Pub, Tennant Creek Telegraph Station, Tingkarli/Lake Mary Ann, Godinmayin Yijard Rivers Arts and Culture Centre, canoeing in Nitmiluk Gorge, Nitmiluk Gorge scenic flight

DAY NINE

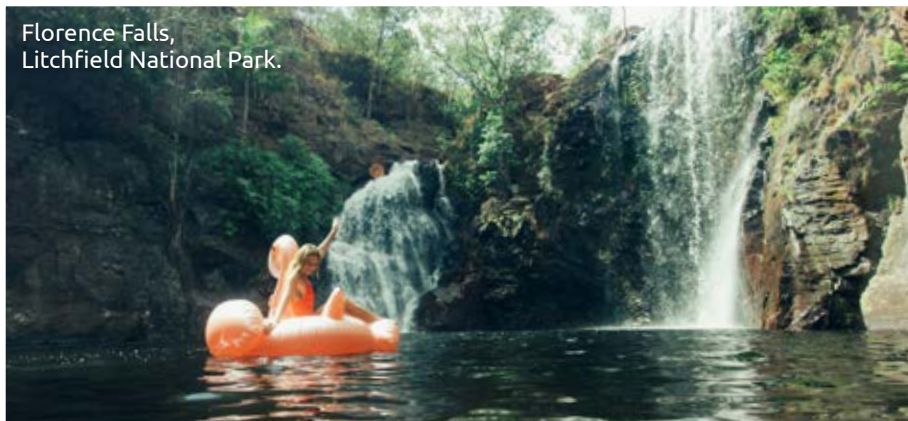
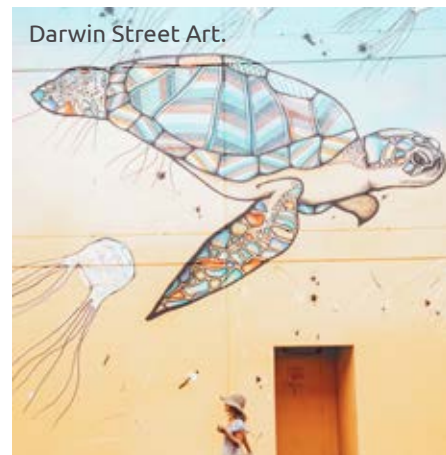
Daly Waters to Katherine

As you make your way towards Katherine, take a break from driving and enjoy a rejuvenating swim in the **Mataranka Thermal Pool**. Fed by spring water in the Daly and Georgina basins, it is surrounded by a palm forest and its waters are a constant 34 degrees celsius.

Katherine is the NT's fourth largest town, and a perfect base to check out the nearby gorge country. Why not explore the vast Nitmiluk National Park's thirteen gorges via a helicopter joy flight, canoe or join a guided boat cruise. For more information about what to do around this area see the **Kakadu and Katherine Nature's Way** itinerary on page 28.



Nabilil Dreaming Sunset Cruise, Nitmiluk Gorge, Nitmiluk National Park.



Florence Falls, Litchfield National Park.

DAY TEN

Katherine and surrounds

Spend the day in Katherine and take in the beautiful surroundings of Nitmiluk (Katherine) Gorge with plenty of activities on offer; visit the hot springs within the township of Katherine and take the option of squeezing in a visit to **Leliyn** (Edith Falls).

DAY ELEVEN

Katherine to Litchfield

Litchfield National Park is only a 90-minute drive from Darwin. Its unspoilt beauty makes the natural water playground a popular spot with day trippers who come from the city for a dip at Florence Falls, Buley Rockhole and Wangi Falls. Walking tracks, camping facilities and 2WD and 4WD accessible tracks means there is an adventure to suit everyone. For more information check out the **Litchfield itinerary** on page 8.

Food and drink
Finch Café, Nitmiluk Café, Pop Rocket Café, Lazy Lizard

Accommodation
Nitmiluk Caravan Park, Knotts Crossing Resort, Katherine Holiday Park, Litchfield Safari Camp

Tours and activities
Katherine scenic flights, Cutta Cutta Caves, Top Didj Cultural Experience, Litchfield National Park, Helicopter Flights

DAY TWELVE

Litchfield to Darwin

You have made it! You are officially an 'explorer'. Take your first glimpse of the Timor Sea as you come into **Darwin**, Australia's northern-most capital city. You will find yourself in a contemporary multicultural metropolis of open-air markets, festivals, Asian influenced cuisine, and an outdoor lifestyle.



Optional add-on

Extra nights

To really make the most of this drive, we highly recommend adding on extra nights in locations such as **Alice Springs, Kings Canyon, Uluru, Tennant Creek** and **Katherine**.



Book your NT Parks Passes:
nt.gov.au/parks